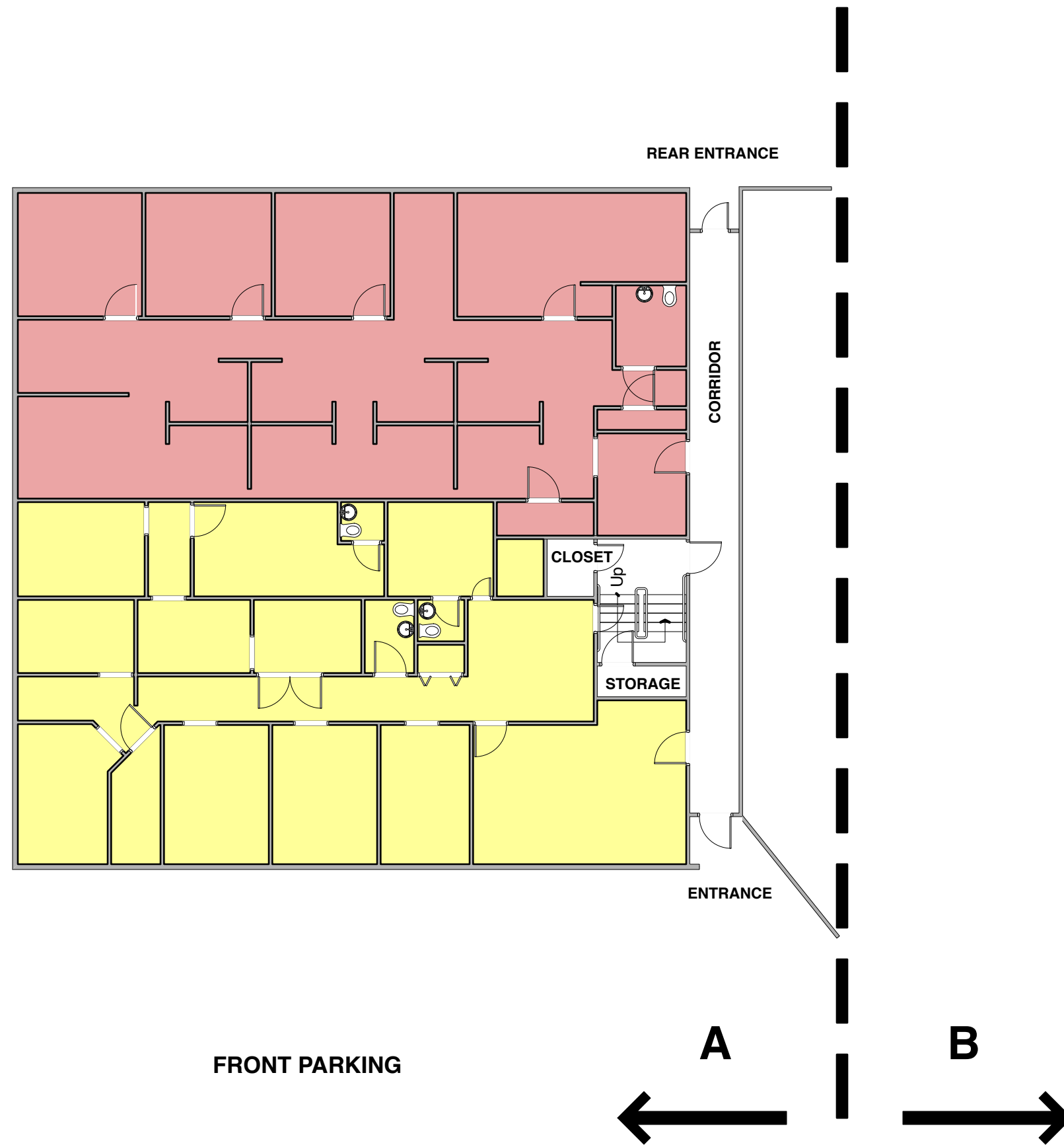


96
Leased
2,420 RSF

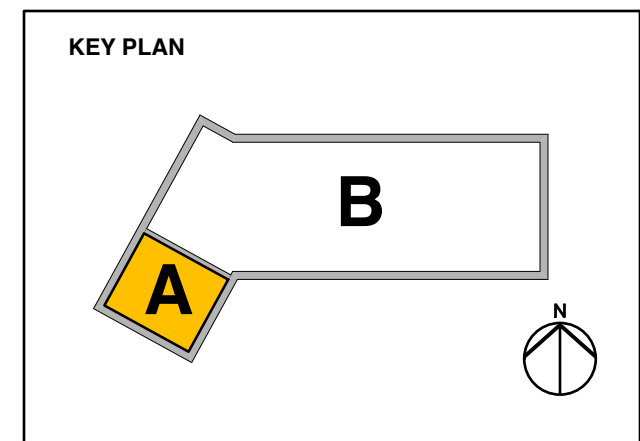
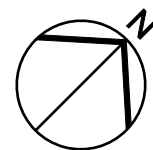
91
Leased
2,572 RSF



FOR PRINT SIZE 11" X 17"

SCALE 1/16" = 1'-0"

0 ft. 9 ft. 7.2 in. 16 ft. 32 ft.



Crestbrook Plaza • first floor - A

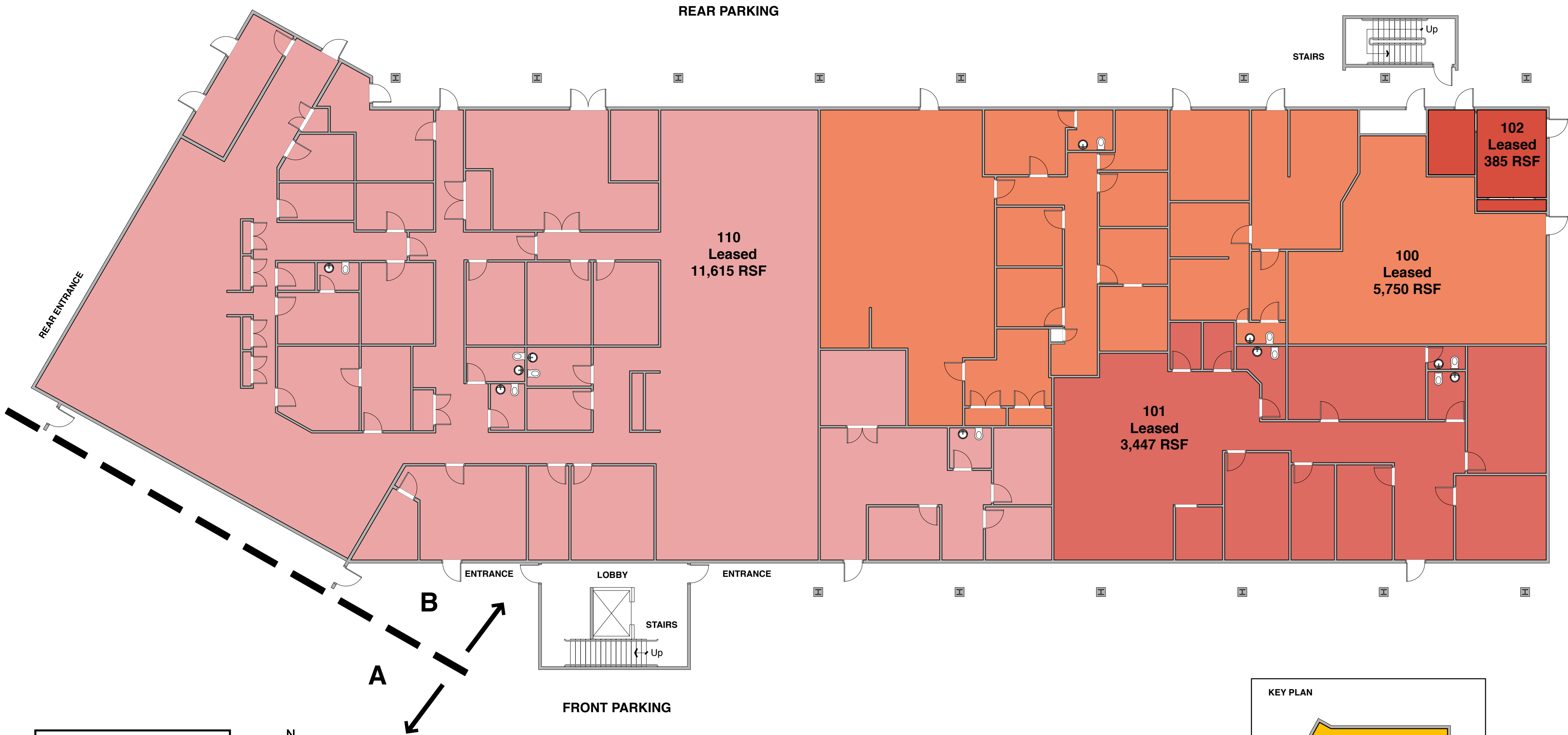
3918 Montclair Road • Birmingham, AL 35213

Collateral Properties
1900 Crestwood Blvd., Suite 300 • Irondale, AL 35210

Tom Coggin
205-951-1015
tcoggin@collateralproperties.com

Bryan Ratliff
205-951-4488
bratliff@collateralproperties.com

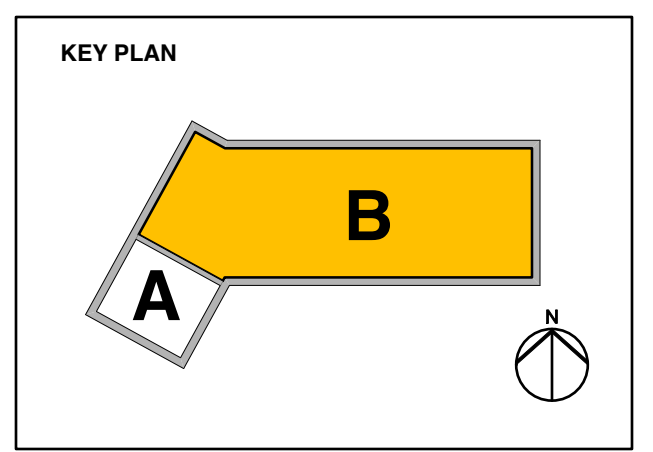
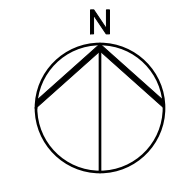
No warranty or representation, expressed or implied, is made to the accuracy of the information contained herein. Such information is submitted subject to change in price, errors, omission, and withdrawal without prior notice. **This document is not for construction purposes.**



FOR PRINT SIZE 11" X 17"

SCALE 1/16" = 1'-0"

0 ft. 9 ft. 7.2 in. 16 ft. 32 ft.



Crestbrook Plaza • first floor - B

3918 Montclair Road • Birmingham, AL 35213

Collateral Properties
 1900 Crestwood Blvd., Suite 300 • Irondale, AL 35210

Tom Coggin
 205-951-1015
 tcoggin@collateralproperties.com

Bryan Ratliff
 205-951-4488
 bratliff@collateralproperties.com

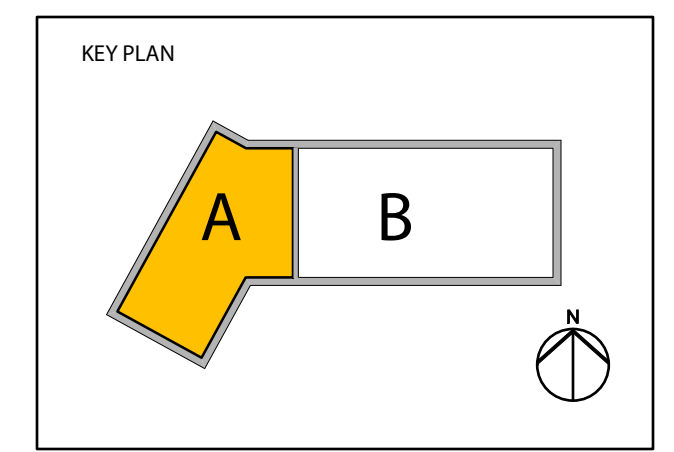
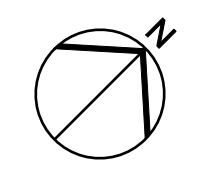
No warranty or representation, expressed or implied, is made to the accuracy of the information contained herein. Such information is submitted subject to change in price, errors, omission, and withdrawal without prior notice. **This document is not for construction purposes.**



FOR PRINT SIZE 11" X 17"

SCALE 1/16" = 1'-0"

0 ft. 9 ft. 7.2 in. 16 ft. 32 ft.



Crestbrook Plaza • second floor - A

3918 Montclair Road • Birmingham, AL 35213

Collateral Properties
1900 Crestwood Blvd., Suite 300 • Irondale, AL 35210

Tom Coggin
205-951-1015
tcoggin@collateralproperties.com

Bryan Ratliff
205-951-4488
bratliff@collateralproperties.com

No warranty or representation, expressed or implied, is made to the accuracy of the information contained herein. Such information is submitted subject to change in price, errors, omission, and withdrawal without prior notice. This document is not for construction purposes.



Crestbrook Plaza • second floor - B

3918 Montclair Road • Birmingham, AL 35213

Collateral Properties
 1900 Crestwood Blvd., Suite 300 • Irondale, AL 35210

Tom Coggin
 205-951-1015
 tcoggin@collateralproperties.com

Bryan Ratliff
 205-951-4488
 bratliff@collateralproperties.com

No warranty or representation, expressed or implied, is made to the accuracy of the information contained herein. Such information is submitted subject to change in price, errors, omission, and withdrawal without prior notice. **This document is not for construction purposes.**